

This article was downloaded by:

On: 30 January 2011

Access details: *Access Details: Free Access*

Publisher *Taylor & Francis*

Informa Ltd Registered in England and Wales Registered Number: 1072954 Registered office: Mortimer House, 37-41 Mortimer Street, London W1T 3JH, UK



Phosphorus, Sulfur, and Silicon and the Related Elements

Publication details, including instructions for authors and subscription information:

<http://www.informaworld.com/smpp/title~content=t713618290>

Errata

To cite this Article (1984) 'Errata', *Phosphorus, Sulfur, and Silicon and the Related Elements*, 19: 3, 383 — 384

To link to this Article: DOI: 10.1080/03086648408077604

URL: <http://dx.doi.org/10.1080/03086648408077604>

PLEASE SCROLL DOWN FOR ARTICLE

Full terms and conditions of use: <http://www.informaworld.com/terms-and-conditions-of-access.pdf>

This article may be used for research, teaching and private study purposes. Any substantial or systematic reproduction, re-distribution, re-selling, loan or sub-licensing, systematic supply or distribution in any form to anyone is expressly forbidden.

The publisher does not give any warranty express or implied or make any representation that the contents will be complete or accurate or up to date. The accuracy of any instructions, formulae and drug doses should be independently verified with primary sources. The publisher shall not be liable for any loss, actions, claims, proceedings, demand or costs or damages whatsoever or howsoever caused arising directly or indirectly in connection with or arising out of the use of this material.

ERRATA

Jerzy Szewczyk, *Phosphorus and Sulfur*, **16**, 365 (1983).

Page

- 366 Drawing marked Figure 1 should be moved up to line 26 as untitled insert (not numbered).
366 Insert new Figure 1. Preferable Conformation Isomers.

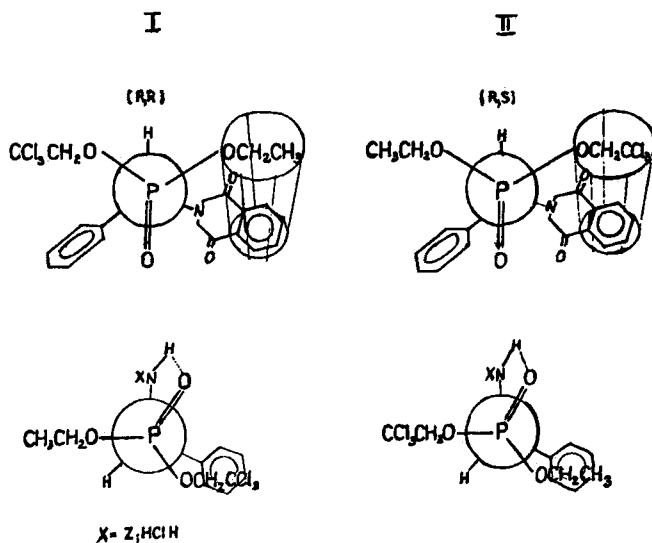


FIGURE 1 Preferable conformation isomers.

- 367 Replace current Figure 2 with new Figure 2. Ethyl-2,2,2-trichloro diester of *N*-carbobenzoxy-1-amino-1-phenylmethanephosphonic acid. Dihedral angles.

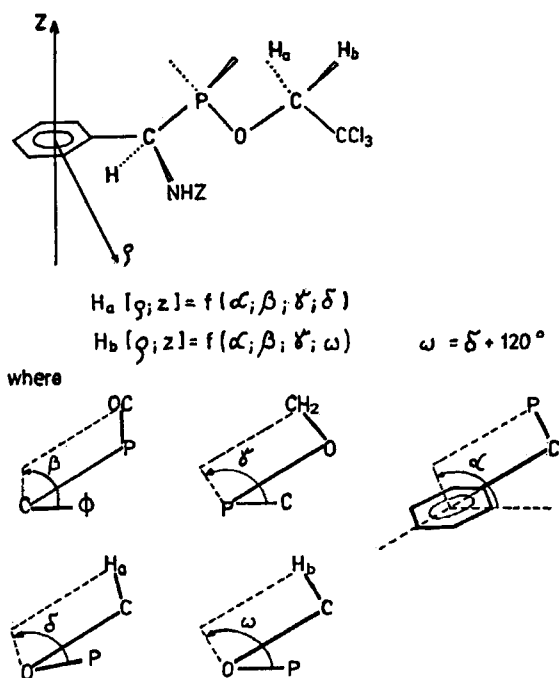


FIGURE 2 Ethyl-2,2,2-trichloro diester of *N*-carbobenzoxy-L-phenylalanine. Dihedral angles.